

Product Datasheet

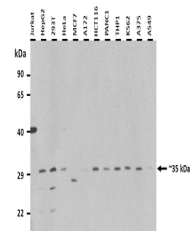
ZFP42 antibody (orb329864)

Description	Rabbit polyclonal antibody to ZFP42
Species/Host	Rabbit
Reactivity	Human
Conjugation	Unconjugated
Tested Applications	WB
Immunogen	The immunogen is a synthetic peptide directed towards the N terminal region of human ZFP42
Target	ZFP42
Preservatives	Liquid. Purified antibody supplied in 1x PBS buffer with 0.09% (w/v) sodium azide and 2% sucrose.
Form/Appearance	Liquid. Purified antibody supplied in 1x PBS buffer with 0.09% (w/v) sodium azide and 2% sucrose.
Concentration	0.5 mg/ml
Storage	Maintain refrigerated at 2-8°C for up to 2 weeks. For long term storage store at -20°C in small aliquots to prevent freeze-thaw cycles.
Note	For research use only
Protein Sequence	Synthetic peptide located within the following region: MSQQLKKRAKTRHQGLGGRAPSGAKPRQGKSSQDLQAEIEPVSAVWALC
Clonality	Polyclonal
MW	35kDa
Uniprot ID	Q96MM3
NCBI	NP_777560
Expiration Date	12 months from date of receipt.

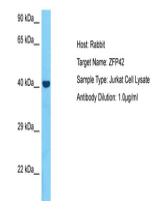
ZFP42



WB Suggested
Anti-ZFP42
Antibody
Titration



25 ug of the
indicated
Human whole
cell ...



Host: Rabbit,
Target Name:
ZFP42,
Sample...