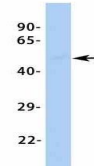


Product Datasheet

EED antibody (orb329845)

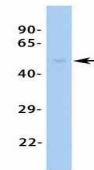
Description	Rabbit polyclonal antibody to EED
Species/Host	Rabbit
Reactivity	Canine, Equine, Guinea pig, Human, Mouse, Rat, Zebrafish
Conjugation	Unconjugated
Tested Applications	ICC, IF, WB
Immunogen	The immunogen is a synthetic peptide directed towards the N terminal region of human EED
Target	EED
Preservatives	Liquid. Purified antibody supplied in 1x PBS buffer with 0.09% (w/v) sodium azide and 2% sucrose.
Form/Appearance	Liquid. Purified antibody supplied in 1x PBS buffer with 0.09% (w/v) sodium azide and 2% sucrose.
Concentration	0.5 mg/ml
Storage	Maintain refrigerated at 2-8°C for up to 2 weeks. For long term storage store at -20°C in small aliquots to prevent freeze-thaw cycles.
Note	For research use only
Protein Sequence	Synthetic peptide located within the following region: GDENDDAVSIESGTINTERPDTPTNTPNAPGRKSWGKGWKSKKCKYSFKC
Clonality	Polyclonal
MW	50kDa
Uniprot ID	O75530
NCBI	NP_003788
Expiration Date	12 months from date of receipt.

EED



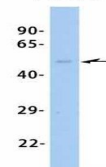
Western blot analysis of human Fetal Liv...

EED



Western blot analysis of human Fetal Lun...

EED



Western blot analysis of human Fetal Hea...