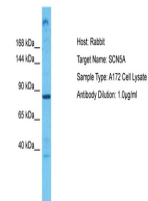


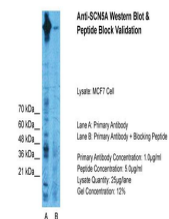
Product Datasheet

SCN5A antibody (orb329836)

Description	Rabbit polyclonal antibody to SCN5A
Species/Host	Rabbit
Reactivity	Human
Conjugation	Unconjugated
Tested Applications	WB
Immunogen	The immunogen is a synthetic peptide directed towards the C terminal region of human SCN5A
Target	SCN5A
Preservatives	Liquid. Purified antibody supplied in 1x PBS buffer with 0.09% (w/v) sodium azide and 2% sucrose.
Form/Appearance	Liquid. Purified antibody supplied in 1x PBS buffer with 0.09% (w/v) sodium azide and 2% sucrose.
Concentration	0.5 mg/ml
Storage	Maintain refrigerated at 2-8°C for up to 2 weeks. For long term storage store at -20°C in small aliquots to prevent freeze-thaw cycles.
Note	For research use only
Protein Sequence	Synthetic peptide located within the following region: FTKRVLGESGEMDALKIQMEEKFMAANPSKISYEPITTTLLRRKHEEVSAM
Clonality	Polyclonal
MW	222kDa
Uniprot ID	Q8IZC9
NCBI	NP_000326
Expiration Date	12 months from date of receipt.



Host: Rabbit,
Target Name:
SCN5A,
Sample...



Host: Rabbit,
Target Name:
SCN5A,
Sample...



WB Suggested
Anti-SCN5A
Antibody
Titrati...