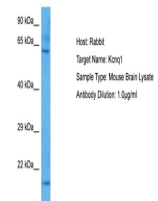


Product Datasheet

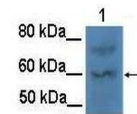
KCNQ1 antibody (orb329835)

Description	Rabbit polyclonal antibody to KCNQ1
Species/Host	Rabbit
Reactivity	Hamster, Human, Mouse
Conjugation	Unconjugated
Tested Applications	WB
Immunogen	The immunogen is a synthetic peptide directed towards the N terminal region of human KCNQ1
Target	KCNQ1
Preservatives	Liquid. Purified antibody supplied in 1x PBS buffer with 0.09% (w/v) sodium azide and 2% sucrose.
Form/Appearance	Liquid. Purified antibody supplied in 1x PBS buffer with 0.09% (w/v) sodium azide and 2% sucrose.
Concentration	1.0 mg/ml
Storage	Maintain refrigerated at 2-8°C for up to 2 weeks. For long term storage store at -20°C in small aliquots to prevent freeze-thaw cycles.
Note	For research use only
Protein Sequence	Synthetic peptide located within the following region: IVVASMVVLGVGSKGQVFATSAIRGIRFLQLRMLHVDRQGGTWRLGGS
Clonality	Polyclonal
MW	60kDa
Uniprot ID	P51787
NCBI	NP_861463
Expiration Date	12 months from date of receipt.



Host: Mouse,
Target Name:
KCNQ1, Sample
...

KCNQ1



Lanes: 100 ug
CHO cell lysate,
Primary A...



WB Suggested
Anti-KCNQ1
Antibody
Titrati...