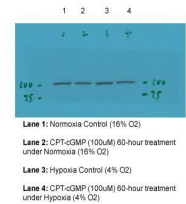


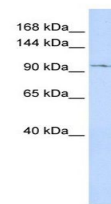
Product Datasheet

TRPC6 antibody (orb329813)

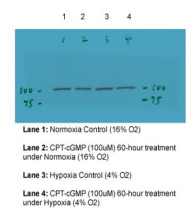
Description	Rabbit polyclonal antibody to TRPC6
Species/Host	Rabbit
Reactivity	Human, Rat
Conjugation	Unconjugated
Tested Applications	WB
Immunogen	The immunogen is a synthetic peptide directed towards the middle region of human TRPC6
Target	TRPC6
Preservatives	Liquid. Purified antibody supplied in 1x PBS buffer with 0.09% (w/v) sodium azide and 2% sucrose.
Form/Appearance	Liquid. Purified antibody supplied in 1x PBS buffer with 0.09% (w/v) sodium azide and 2% sucrose.
Concentration	0.5 mg/ml
Storage	Maintain refrigerated at 2-8°C for up to 2 weeks. For long term storage store at -20°C in small aliquots to prevent freeze-thaw cycles.
Note	For research use only
Protein Sequence	Synthetic peptide located within the following region: KKGFQEDAEMNKINEEKKLGILGSHEDLSKLSLDKKQVGHNKQPSIRSSE
Clonality	Polyclonal
MW	106kDa
Uniprot ID	Q9Y210
NCBI	NP_004612
Expiration Date	12 months from date of receipt.



Western blot analysis of TRPC6 antibody



Western blot analysis of MCF7 cell lysat...



TRPC6 antibody - middle region (orb32981...