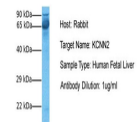


Product Datasheet

KCNN2 antibody (orb329809)

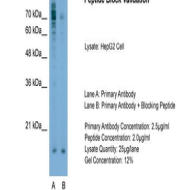
Description	Rabbit polyclonal antibody to KCNN2
Species/Host	Rabbit
Reactivity	Human, Monkey, Rat
Conjugation	Unconjugated
Tested Applications	IHC, WB
Immunogen	The immunogen is a synthetic peptide directed towards the C terminal region of human KCNN2
Target	KCNN2
Preservatives	Liquid. Purified antibody supplied in 1x PBS buffer with 0.09% (w/v) sodium azide and 2% sucrose.
Form/Appearance	Liquid. Purified antibody supplied in 1x PBS buffer with 0.09% (w/v) sodium azide and 2% sucrose.
Concentration	1.0 mg/ml
Storage	Maintain refrigerated at 2-8°C for up to 2 weeks. For long term storage store at -20°C in small aliquots to prevent freeze-thaw cycles.
Note	For research use only
Protein Sequence	Synthetic peptide located within the following region: IDHAKVRKHQRKFLQAIHQLRSVKMEQRKLNLDQANTLVDLAKTQNIMYDM
Clonality	Polyclonal
MW	64kDa
Uniprot ID	Q9H2S1
NCBI	NP_067627
Expiration Date	12 months from date of receipt.

KCNN2

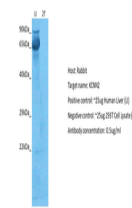


Host: Rabbit,
Target Name:
KCNN2,
Sample...

Anti-KCNN2 Western Blot & Peptide Block Validation



Host: Rabbit,
Target Name:
KCNN2,
Sample...



Host: Rabbit,
Target: KCNN2,
Positive co...