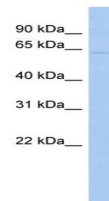


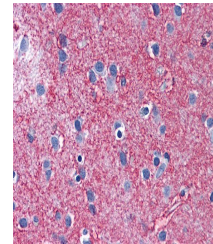
Product Datasheet

SLC1A2 antibody (orb329750)

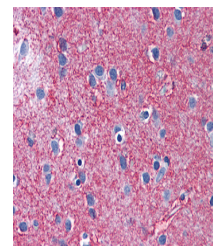
Description	Rabbit polyclonal antibody to SLC1A2
Species/Host	Rabbit
Reactivity	Canine, Equine, Guinea pig, Human, Mouse, Rat, Zebrafish
Conjugation	Unconjugated
Tested Applications	IHC, WB
Immunogen	The immunogen is a synthetic peptide directed towards the middle region of human SLC1A2
Target	SLC1A2
Preservatives	Liquid. Purified antibody supplied in 1x PBS buffer with 0.09% (w/v) sodium azide and 2% sucrose.
Form/Appearance	Liquid. Purified antibody supplied in 1x PBS buffer with 0.09% (w/v) sodium azide and 2% sucrose.
Concentration	0.5 mg/ml
Storage	Maintain refrigerated at 2-8°C for up to 2 weeks. For long term storage store at -20°C in small aliquots to prevent freeze-thaw cycles.
Note	For research use only
Protein Sequence	Synthetic peptide located within the following region: LVAVDWLLDRMRTSVNVVVGDSFGAGIVYHLSKSELDTIDSQHRVHEDIEM
Clonality	Polyclonal
MW	62kDa
Uniprot ID	P43004
NCBI	NP_004162
Expiration Date	12 months from date of receipt.



Western blot analysis of HT1080 cell lys...



Immunohistochemical staining of human br...



Anti-SLC1A2 / EAAT2 antibody IHC of huma...