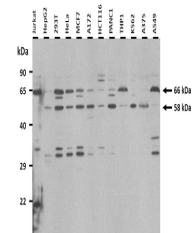


Product Datasheet

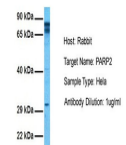
PARP2 antibody (orb329744)

Description	Rabbit polyclonal antibody to PARP2
Species/Host	Rabbit
Reactivity	Human, Rat
Conjugation	Unconjugated
Tested Applications	ICC, IF, WB
Immunogen	The immunogen is a synthetic peptide directed towards the middle region of human PARP2
Target	PARP2
Preservatives	Liquid. Purified antibody supplied in 1x PBS buffer with 0.09% (w/v) sodium azide and 2% sucrose.
Form/Appearance	Liquid. Purified antibody supplied in 1x PBS buffer with 0.09% (w/v) sodium azide and 2% sucrose.
Concentration	0.5 mg/ml
Storage	Maintain refrigerated at 2-8°C for up to 2 weeks. For long term storage store at -20°C in small aliquots to prevent freeze-thaw cycles.
Note	For research use only
Protein Sequence	Synthetic peptide located within the following region: LLDLFEVKDGEKEAFREDLHNRMLLWHGSRMSNWVGILSHGLRIAHPEA
Clonality	Polyclonal
MW	66 kDa
Uniprot ID	Q9UGN5
NCBI	NP_005475
Expiration Date	12 months from date of receipt.

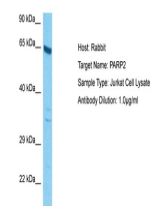


25 ug of the indicated Human whole cell ...

PARP2



Host: Rabbit,
Target Name:
PARP2,
Sample...



Host: Rabbit,
Target Name:
PARP2,
Sample...