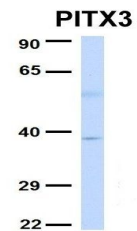


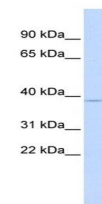
Product Datasheet

PITX3 antibody (orb329700)

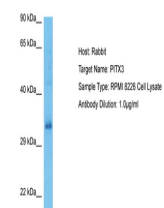
Description	Rabbit polyclonal antibody to PITX3
Species/Host	Rabbit
Reactivity	Canine, Equine, Guinea pig, Human, Mouse, Rat, Sheep
Conjugation	Unconjugated
Tested Applications	WB
Immunogen	The immunogen is a synthetic peptide directed towards the middle region of human PITX3
Target	PITX3
Preservatives	Liquid. Purified antibody supplied in 1x PBS buffer with 0.09% (w/v) sodium azide and 2% sucrose.
Form/Appearance	Liquid. Purified antibody supplied in 1x PBS buffer with 0.09% (w/v) sodium azide and 2% sucrose.
Concentration	0.5 mg/ml
Storage	Maintain refrigerated at 2-8°C for up to 2 weeks. For long term storage store at -20°C in small aliquots to prevent freeze-thaw cycles.
Note	For research use only
Protein Sequence	Synthetic peptide located within the following region: YEEVYPGYSYGNWPPKALAPPLAAKTFPFAFNSVNVGPLASQPVFSPSS
Clonality	Polyclonal
MW	32kDa
Uniprot ID	O75364
NCBI	NP_005020
Expiration Date	12 months from date of receipt.



Western blot analysis of human Fetal Liver tissue



Western blot analysis of human Liver tissue



Host: Rabbit,
Target Name:
PITX3, Sample...