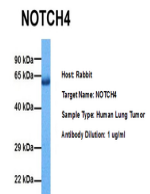


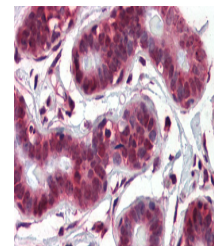
Product Datasheet

NOTCH4 antibody (orb329684)

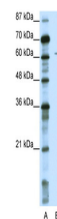
Description	Rabbit polyclonal antibody to NOTCH4
Species/Host	Rabbit
Reactivity	Human
Conjugation	Unconjugated
Tested Applications	IHC, WB
Immunogen	The immunogen is a synthetic peptide directed towards the middle region of human NOTCH4
Target	NOTCH4
Preservatives	Liquid. Purified antibody supplied in 1x PBS buffer with 0.09% (w/v) sodium azide and 2% sucrose.
Form/Appearance	Liquid. Purified antibody supplied in 1x PBS buffer with 0.09% (w/v) sodium azide and 2% sucrose.
Concentration	0.5 mg/ml
Storage	Maintain refrigerated at 2-8°C for up to 2 weeks. For long term storage store at -20°C in small aliquots to prevent freeze-thaw cycles.
Note	For research use only
Protein Sequence	Synthetic peptide located within the following region: LLLGLGAARELRDQAGLAPADVAHQNRNHWDLLTLLGAGPPEARHKATPG
Clonality	Polyclonal
MW	61kDa
Uniprot ID	Q99466
Expiration Date	12 months from date of receipt.



Host: Rabbit, Target Name: NOTCH4, Sampl...



Immunohistochemistry with Human Breast t...



WB Suggested Anti-NOTCH4 Antibody Titrat...