

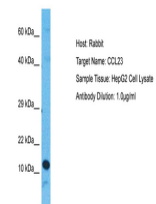
Product Datasheet

CCL23 antibody (orb329584)

Description	Rabbit polyclonal antibody to CCL23
Species/Host	Rabbit
Reactivity	Human
Conjugation	Unconjugated
Tested Applications	WB
Immunogen	The immunogen is a synthetic peptide directed towards the middle region of Human CCL23
Target	CCL23
Preservatives	Liquid. Purified antibody supplied in 1x PBS buffer with 0.09% (w/v) sodium azide and 2% sucrose.
Form/Appearance	Liquid. Purified antibody supplied in 1x PBS buffer with 0.09% (w/v) sodium azide and 2% sucrose.
Concentration	0.5 mg/ml
Storage	Maintain refrigerated at 2-8°C for up to 2 weeks. For long term storage store at -20°C in small aliquots to prevent freeze-thaw cycles.
Note	For research use only
Protein Sequence	Synthetic peptide located within the following region: SADCCISYTPRSIPCSLLESYFETNSECSKPGVIFLTKKGRRFCANPSDK
Clonality	Polyclonal
MW	13kDa
Uniprot ID	P55773
NCBI	NP_665905
Expiration Date	12 months from date of receipt.



Western blot analysis of human HepG2 cells. Who...



Host: Rabbit, Target Name: CCL23, Sample...