

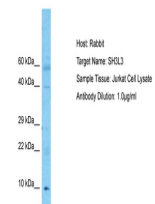
Product Datasheet

SH3L3 antibody (orb327407)

Description	Rabbit polyclonal antibody to SH3L3
Species/Host	Rabbit
Reactivity	Human
Conjugation	Unconjugated
Tested Applications	WB
Immunogen	The immunogen is a synthetic peptide directed towards the N-terminal region of Human SH3L3
Target	SH3BGRL3
Preservatives	Liquid. Purified antibody supplied in 1x PBS buffer with 0.09% (w/v) sodium azide and 2% sucrose.
Form/Appearance	Liquid. Purified antibody supplied in 1x PBS buffer with 0.09% (w/v) sodium azide and 2% sucrose.
Concentration	0.5 mg/ml
Storage	Maintain refrigerated at 2-8°C for up to 2 weeks. For long term storage store at -20°C in small aliquots to prevent freeze-thaw cycles.
Note	For research use only
Protein Sequence	Synthetic peptide located within the following region: STSVTGSREIKSQQSEVTRILDGKRIQYQLVDISQDNALRDEMRLAGNP
Clonality	Polyclonal
MW	10kDa
Uniprot ID	Q9H299
NCBI	NP_112576
Expiration Date	12 months from date of receipt.



Western blot analysis of human Jurkat Wh...



Host: Rabbit,
Target Name:
SH3L3,
Sample...