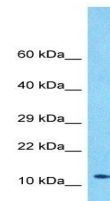


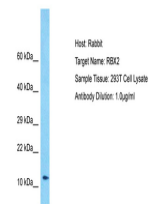
Product Datasheet

RBX2 antibody (orb327338)

Description	Rabbit polyclonal antibody to RBX2
Species/Host	Rabbit
Reactivity	Human
Conjugation	Unconjugated
Tested Applications	WB
Immunogen	The immunogen is a synthetic peptide directed towards the N-terminal region of Human RBX2
Target	RNF7
Preservatives	Liquid. Purified antibody supplied in 1x PBS buffer with 0.09% (w/v) sodium azide and 2% sucrose.
Form/Appearance	Liquid. Purified antibody supplied in 1x PBS buffer with 0.09% (w/v) sodium azide and 2% sucrose.
Concentration	0.5 mg/ml
Storage	Maintain refrigerated at 2-8°C for up to 2 weeks. For long term storage store at -20°C in small aliquots to prevent freeze-thaw cycles.
Note	For research use only
Protein Sequence	Synthetic peptide located within the following region: ALASHGSSGSKSGGDKMFLKKNVAVAMWSWDVECDTCAICRVQVMDAC
Clonality	Polyclonal
MW	12kDa
Uniprot ID	Q9UBF6
Expiration Date	12 months from date of receipt.



Western blot analysis of human 293T Whole...



Host: Rabbit, Target Name: RBX2, Sample

...