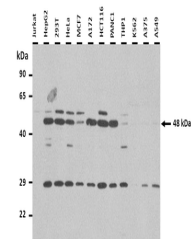


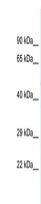
Product Datasheet

SLC35B2 antibody (orb326604)

Description	Rabbit polyclonal antibody to SLC35B2
Species/Host	Rabbit
Reactivity	Human
Conjugation	Unconjugated
Tested Applications	WB
Immunogen	The immunogen is a synthetic peptide directed towards the C-terminal region of Human SLC35B2
Target	SLC35B2
Preservatives	Liquid. Purified antibody supplied in 1x PBS buffer with 0.09% (w/v) sodium azide and 2% sucrose.
Form/Appearance	Liquid. Purified antibody supplied in 1x PBS buffer with 0.09% (w/v) sodium azide and 2% sucrose.
Concentration	0.5 mg/ml
Storage	Maintain refrigerated at 2-8°C for up to 2 weeks. For long term storage store at -20°C in small aliquots to prevent freeze-thaw cycles.
Note	For research use only
Protein Sequence	Synthetic peptide located within the following region: CLLYGHTVTVVGGLGVAVVFAALLLRVYARGRLKQRGKKAVPVESPQKV
Clonality	Polyclonal
MW	48 kDa
Uniprot ID	Q8TB61
NCBI	NP_835361
Expiration Date	12 months from date of receipt.



25 ug of the indicated Human whole cell ...



WB Suggested Anti-SLC35B2 Antibody, Titr...