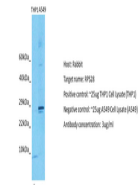


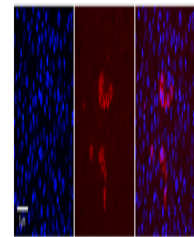
Product Datasheet

RPS28 antibody (orb326551)

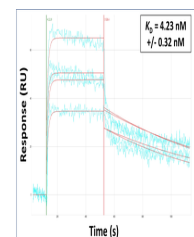
Description	Rabbit polyclonal antibody to RPS28
Species/Host	Rabbit
Reactivity	Human
Conjugation	Unconjugated
Tested Applications	IHC, WB
Immunogen	The immunogen is a synthetic peptide directed towards the N-terminal region of Human RPS28
Target	RPS28
Preservatives	Liquid. Purified antibody supplied in 1x PBS buffer with 0.09% (w/v) sodium azide and 2% sucrose.
Form/Appearance	Liquid. Purified antibody supplied in 1x PBS buffer with 0.09% (w/v) sodium azide and 2% sucrose.
Concentration	0.5 mg/ml
Storage	Maintain refrigerated at 2-8°C for up to 2 weeks. For long term storage store at -20°C in small aliquots to prevent freeze-thaw cycles.
Note	For research use only
Protein Sequence	Synthetic peptide located within the following region: RTGSQGQCTQVRVEFMDDTSRSIIRNVKGPVREGDVLTLLESEREARRLR
Clonality	Polyclonal
MW	8kDa
Uniprot ID	P62857
NCBI	NP_001022
Expiration Date	12 months from date of receipt.



Host: Rabbit,
Target: RPS28,
Positive co...



Rabbit Anti-RPS28
Antibody,
Catalog Num...



Surface
Plasmon
Resonance
Kinetic Charac...