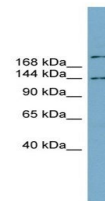


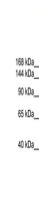
Product Datasheet

MAPKBP1 antibody (orb325963)

Description	Rabbit polyclonal antibody to MAPKBP1
Species/Host	Rabbit
Reactivity	Canine, Equine, Guinea pig, Human, Mouse, Rat
Conjugation	Unconjugated
Tested Applications	WB
Immunogen	The immunogen is a synthetic peptide directed towards the N terminal region of human MAPKBP1
Target	MAPKBP1
Preservatives	Liquid. Purified antibody supplied in 1x PBS buffer with 0.09% (w/v) sodium azide and 2% sucrose.
Form/Appearance	Liquid. Purified antibody supplied in 1x PBS buffer with 0.09% (w/v) sodium azide and 2% sucrose.
Concentration	0.5 mg/ml
Storage	Maintain refrigerated at 2-8°C for up to 2 weeks. For long term storage store at -20°C in small aliquots to prevent freeze-thaw cycles.
Note	For research use only
Protein Sequence	Synthetic peptide located within the following region: MAVEGSTITSRIKNLLRSPSIKLRRSKAGNRREDLSSKVTLEKVLGITVS
Clonality	Polyclonal
MW	163kDa
Uniprot ID	O60336
NCBI	NP_055809
Expiration Date	12 months from date of receipt.



Western blot analysis of human Stomach t...



WB Suggested Anti-MAPKBP1 Antibody Titra...