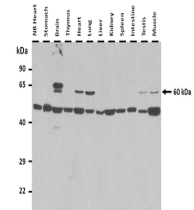


Product Datasheet

Mfsd7b antibody (orb325948)

Description	Rabbit polyclonal antibody to Mfsd7b
Species/Host	Rabbit
Reactivity	Mouse
Conjugation	Unconjugated
Tested Applications	WB
Target	FLVCR1
Preservatives	Liquid. Purified antibody supplied in 1x PBS buffer with 0.09% (w/v) sodium azide and 2% sucrose.
Form/Appearance	Liquid. Purified antibody supplied in 1x PBS buffer with 0.09% (w/v) sodium azide and 2% sucrose.
Concentration	0.5 mg/ml
Storage	Maintain refrigerated at 2-8°C for up to 2 weeks. For long term storage store at -20°C in small aliquots to prevent freeze-thaw cycles.
Note	For research use only
Protein Sequence	Synthetic peptide located within the following region: GPKEVSTACATAVLGNQLGTAVGFLLPPVLVPALGTQNSTGLLAHTQNNT
Clonality	Polyclonal
MW	60 kDa
Uniprot ID	B2RXV4
NCBI	NP_001074728
Expiration Date	12 months from date of receipt.



25 ug of the indicated Mouse whole tissu...



WB Suggested Anti-Mfsd7b Antibody, Titra...