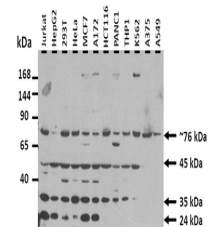


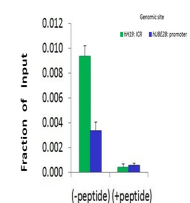
Product Datasheet

Suv420h1 antibody (orb325667)

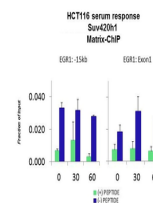
Description	Rabbit polyclonal antibody to Suv420h1
Species/Host	Rabbit
Reactivity	Mouse
Conjugation	Unconjugated
Tested Applications	ChIP, WB
Target	KMT5B
Preservatives	Liquid. Purified antibody supplied in 1x PBS buffer with 0.09% (w/v) sodium azide and 2% sucrose.
Form/Appearance	Liquid. Purified antibody supplied in 1x PBS buffer with 0.09% (w/v) sodium azide and 2% sucrose.
Concentration	0.5 mg/ml
Storage	Maintain refrigerated at 2-8°C for up to 2 weeks. For long term storage store at -20°C in small aliquots to prevent freeze-thaw cycles.
Note	For research use only
Protein Sequence	Synthetic peptide located within the following region: FINHDCRPNCKFVSTGRDTACVKALRDIEPGEEISCYGDFGFFGENNEFC
Clonality	Polyclonal
MW	32 kDa
Uniprot ID	Q3U8K7
NCBI	NP_001161356
Expiration Date	12 months from date of receipt.



25 ug of the indicated Human whole cell ...



Chromatin Immunoprecipitation (ChIP) Usi...



Quiescent human colon carcinoma HCT116 c...