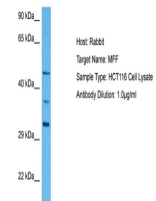


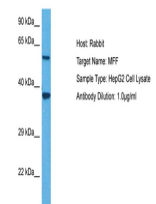
Product Datasheet

MFF antibody (orb325479)

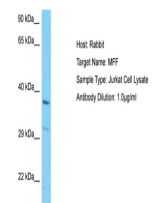
Description	Rabbit polyclonal antibody to MFF
Species/Host	Rabbit
Reactivity	Human
Conjugation	Unconjugated
Tested Applications	WB
Immunogen	The immunogen is a synthetic peptide directed towards the C terminal region of human C2orf33
Target	MFF
Preservatives	Liquid. Purified antibody supplied in 1x PBS buffer with 0.09% (w/v) sodium azide and 2% sucrose.
Form/Appearance	Liquid. Purified antibody supplied in 1x PBS buffer with 0.09% (w/v) sodium azide and 2% sucrose.
Concentration	Batch dependent within range: 100 ul at 0.5 - 1 mg/ml
Storage	Maintain refrigerated at 2-8°C for up to 2 weeks. For long term storage store at -20°C in small aliquots to prevent freeze-thaw cycles.
Note	For research use only
Protein Sequence	Synthetic peptide located within the following region: VVDAASLRRQIIKLNRRRLQLLEEENKERAKREVMYSITVAFWLLNSWLW
Clonality	Polyclonal
MW	38kDa
Uniprot ID	Q9GZY8
NCBI	NP_064579
Expiration Date	12 months from date of receipt.



Host: Rabbit,
Target Name:
MFF, Sample
T...



Host: Rabbit,
Target Name:
MFF, Sample
T...



Host: Rabbit,
Target Name:
MFF, Sample
T...