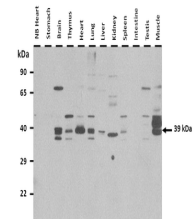


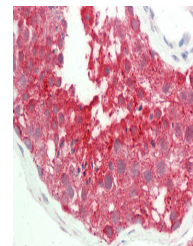
Product Datasheet

Gyg antibody (orb325406)

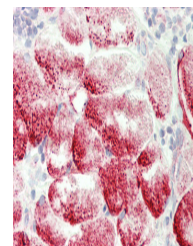
Description	Rabbit polyclonal antibody to Gyg
Species/Host	Rabbit
Reactivity	Human, Mouse
Conjugation	Unconjugated
Tested Applications	WB
Immunogen	The immunogen is a synthetic peptide corresponding to a region of Mouse
Target	Gyg
Preservatives	Liquid. Purified antibody supplied in 1x PBS buffer with 0.09% (w/v) sodium azide and 2% sucrose.
Form/Appearance	Liquid. Purified antibody supplied in 1x PBS buffer with 0.09% (w/v) sodium azide and 2% sucrose.
Concentration	0.5 mg/ml
Storage	Maintain refrigerated at 2-8°C for up to 2 weeks. For long term storage store at -20°C in small aliquots to prevent freeze-thaw cycles.
Note	For research use only
Protein Sequence	Synthetic peptide located within the following region: SDLSFGAEAPAAPQPSMSSEERKERWEQGQADYMGADSFNKRKLDITYLQ
Clonality	Polyclonal
MW	39 kDa
Uniprot ID	Q9R062
NCBI	NP_038783
Expiration Date	12 months from date of receipt.



25 ug of the indicated Mouse whole cell ...



Rabbit Anti-Gyg antibody, Formalin Fixed...



Rabbit Anti-Gyg antibody, Formalin Fixed...