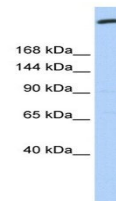


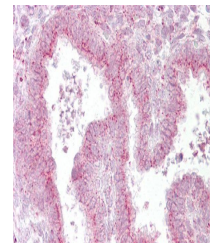
Product Datasheet

GOLGB1 antibody (orb325275)

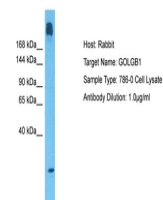
Description	Rabbit polyclonal antibody to GOLGB1
Species/Host	Rabbit
Reactivity	Canine, Equine, Human, Mouse, Porcine, Rat
Conjugation	Unconjugated
Tested Applications	IHC, WB
Immunogen	The immunogen is a synthetic peptide directed towards the N terminal region of human GOLGB1
Target	GOLGB1
Preservatives	Liquid. Purified antibody supplied in 1x PBS buffer with 0.09% (w/v) sodium azide and 2% sucrose.
Form/Appearance	Liquid. Purified antibody supplied in 1x PBS buffer with 0.09% (w/v) sodium azide and 2% sucrose.
Concentration	0.5 mg/ml
Storage	Maintain refrigerated at 2-8°C for up to 2 weeks. For long term storage store at -20°C in small aliquots to prevent freeze-thaw cycles.
Note	For research use only
Protein Sequence	Synthetic peptide located within the following region: NKYIEEMKAQGTVLPTEPQSEEQLSKHKDKSSTEEEMEIEKIKHKLQEKE
Clonality	Polyclonal
MW	376 kDa
Uniprot ID	Q14789
NCBI	NP_004478
Expiration Date	12 months from date of receipt.



Western blot analysis of 721_B cell lysa...



Immunohistochemical staining of human Ut...



Host: Rabbit, Target Name: GOLGB1, Sampl...