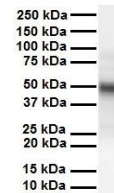


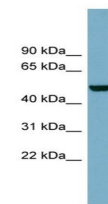
Product Datasheet

CSF1 antibody (orb325141)

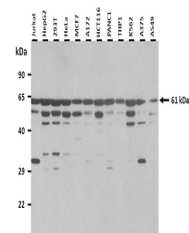
Description	Rabbit polyclonal antibody to CSF1
Species/Host	Rabbit
Reactivity	Canine, Guinea pig, Human, Mouse, Porcine, Rat
Conjugation	Unconjugated
Tested Applications	ICC, IF, IHC-P, WB
Immunogen	The immunogen is a synthetic peptide directed towards the middle region of human CSF1
Target	CSF1
Preservatives	Liquid. Purified antibody supplied in 1x PBS buffer with 0.09% (w/v) sodium azide and 2% sucrose.
Form/Appearance	Liquid. Purified antibody supplied in 1x PBS buffer with 0.09% (w/v) sodium azide and 2% sucrose.
Concentration	Batch dependent within range: 100 µl at 0.5-1 mg/ml
Storage	Maintain refrigerated at 2-8°C for up to 2 weeks. For long term storage store at -20°C in small aliquots to prevent freeze-thaw cycles.
Note	For research use only
Protein Sequence	Synthetic peptide located within the following region: SGSVLPLGELEGRSTRDRRSPAEPGGPASEGAARPLPRFNSVPLTDTG
Clonality	Polyclonal
MW	61 kDa
Uniprot ID	P09603
NCBI	NP_000748
Expiration Date	12 months from date of receipt.



Western blot analysis of human heart tis...



Western blot analysis of COLO205 cell ly...



25 ug of the indicated Human whole cell ...