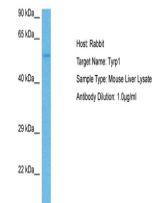


Product Datasheet

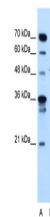
TYRP1 antibody (orb325135)

Description	Rabbit polyclonal antibody to TYRP1
Species/Host	Rabbit
Reactivity	Human, Mouse
Conjugation	Unconjugated
Tested Applications	WB
Immunogen	The immunogen is a synthetic peptide directed towards the N terminal region of human TYRP1
Target	TYRP1
Preservatives	Liquid. Purified antibody supplied in 1x PBS buffer with 0.09% (w/v) sodium azide and 2% sucrose.
Form/Appearance	Liquid. Purified antibody supplied in 1x PBS buffer with 0.09% (w/v) sodium azide and 2% sucrose.
Concentration	1.0 mg/ml
Storage	Maintain refrigerated at 2-8°C for up to 2 weeks. For long term storage store at -20°C in small aliquots to prevent freeze-thaw cycles.
Note	For research use only
Protein Sequence	Synthetic peptide located within the following region: AKRTHPLFVIATRRESEILGPDGNTQPENISINYFVWTHYYSVKKTF
Clonality	Polyclonal
MW	59kDa
Uniprot ID	P17643
NCBI	NP_000541
Expiration Date	12 months from date of receipt.



Host: Mouse,
Target Name:
TYRP1, Sample

...



WB Suggested
Anti-TYRP1
Antibody
Titrati...