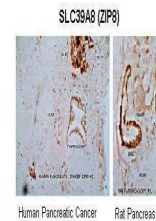


Product Datasheet

SLC39A8 antibody (orb325120)

Description	Rabbit polyclonal antibody to SLC39A8
Species/Host	Rabbit
Reactivity	Human
Conjugation	Unconjugated
Tested Applications	IHC, WB
Immunogen	The immunogen is a synthetic peptide directed towards the N terminal region of human SLC39A8
Target	SLC39A8
Preservatives	Liquid. Purified antibody supplied in 1x PBS buffer with 0.09% (w/v) sodium azide and 2% sucrose.
Form/Appearance	Liquid. Purified antibody supplied in 1x PBS buffer with 0.09% (w/v) sodium azide and 2% sucrose.
Concentration	0.5 mg/ml
Storage	Maintain refrigerated at 2-8°C for up to 2 weeks. For long term storage store at -20°C in small aliquots to prevent freeze-thaw cycles.
Note	For research use only
Protein Sequence	Synthetic peptide located within the following region: QLNFHPCEDRPHKHKTRPSHSEVWGYGFLSVTIINLASLLGLILTPLIKKS
Clonality	Polyclonal
MW	50kDa
Uniprot ID	Q9C0K1
NCBI	NP_071437
Expiration Date	12 months from date of receipt.



Sample Type:
Human
Pancreas
(Cancer) & r...



WB Suggested
Anti-SLC39A8
Antibody Titra...