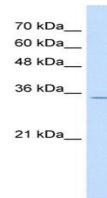


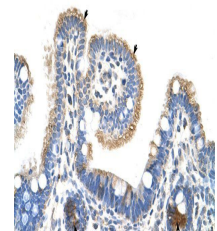
Product Datasheet

RNF39 antibody (orb325075)

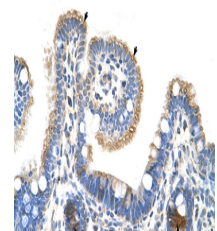
Description	Rabbit polyclonal antibody to RNF39
Species/Host	Rabbit
Reactivity	Equine, Human
Conjugation	Unconjugated
Tested Applications	IHC, WB
Immunogen	The immunogen is a synthetic peptide directed towards the N terminal region of human RNF39
Target	RNF39
Preservatives	Liquid. Purified antibody supplied in 1x PBS buffer with 0.09% (w/v) sodium azide and 2% sucrose.
Form/Appearance	Liquid. Purified antibody supplied in 1x PBS buffer with 0.09% (w/v) sodium azide and 2% sucrose.
Concentration	0.5 mg/ml
Storage	Maintain refrigerated at 2-8°C for up to 2 weeks. For long term storage store at -20°C in small aliquots to prevent freeze-thaw cycles.
Note	For research use only
Protein Sequence	Synthetic peptide located within the following region: EGRKAAKVNAGVGEKGIYTASSRGGPPSARSKAVTVVAEGAASRSWLSMD
Clonality	Polyclonal
MW	39kDa
Uniprot ID	A2BEK3
NCBI	NP_739575
Expiration Date	12 months from date of receipt.



Western blot analysis of Jurkat cell lys...



Immunohistochemical staining of human In...



Human Intestine