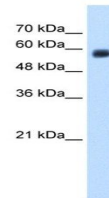


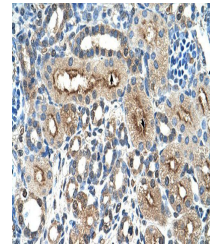
Product Datasheet

CLEC4M antibody (orb325005)

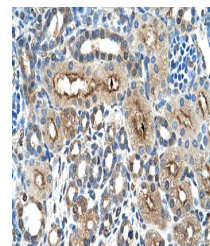
Description	Rabbit polyclonal antibody to CLEC4M
Species/Host	Rabbit
Reactivity	Human, Porcine
Conjugation	Unconjugated
Tested Applications	IHC, WB
Immunogen	The immunogen is a synthetic peptide directed towards the N terminal region of human CLEC4M
Target	CLEC4M
Preservatives	Liquid. Purified antibody supplied in 1x PBS buffer with 0.09% (w/v) sodium azide and 2% sucrose.
Form/Appearance	Liquid. Purified antibody supplied in 1x PBS buffer with 0.09% (w/v) sodium azide and 2% sucrose.
Concentration	1.0 mg/ml
Storage	Maintain refrigerated at 2-8°C for up to 2 weeks. For long term storage store at -20°C in small aliquots to prevent freeze-thaw cycles.
Note	For research use only
Protein Sequence	Synthetic peptide located within the following region: LVLQLLSFMLLAGVLVAILVQVSKVPSSLSQEIQSEQDAIYQNLTLKAAV
Clonality	Polyclonal
MW	44kDa
Uniprot ID	Q9H2X3
NCBI	NP_055072
Expiration Date	12 months from date of receipt.



Western blot analysis of HepG2 cell lysa...



Immunohistochemical staining of human ki...



Human kidney