

Product Datasheet

SLC6A2 antibody (orb324970)

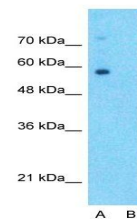
Description	Rabbit polyclonal antibody to SLC6A2
Species/Host	Rabbit
Reactivity	Canine, Equine, Guinea pig, Human, Mouse, Rat
Conjugation	Unconjugated
Tested Applications	WB
Immunogen	The immunogen is a synthetic peptide directed towards the middle region of human SLC6A2
Target	SLC6A2
Preservatives	Liquid. Purified antibody supplied in 1x PBS buffer with 0.09% (w/v) sodium azide and 2% sucrose.
Form/Appearance	Liquid. Purified antibody supplied in 1x PBS buffer with 0.09% (w/v) sodium azide and 2% sucrose.
Concentration	0.5 mg/ml
Storage	Maintain refrigerated at 2-8°C for up to 2 weeks. For long term storage store at -20°C in small aliquots to prevent freeze-thaw cycles.
Note	For research use only
Protein Sequence	Synthetic peptide located within the following region: STLSGSTFWAVVFFVMLLALGLDSSMGGMEAVITGLADDFQVLKRHRKLF
Clonality	Polyclonal
MW	69kDa
Uniprot ID	P23975
NCBI	NP_001034
Expiration Date	12 months from date of receipt.

SLC6A2



Western blot analysis of human Placenta

...



Western blot analysis of human Fetal Lung...



Western blot analysis of human heart tissue...