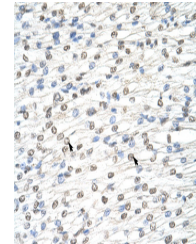


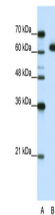
Product Datasheet

DIS3L2 antibody (orb324938)

Description	Rabbit polyclonal antibody to DIS3L2
Species/Host	Rabbit
Reactivity	Human
Conjugation	Unconjugated
Tested Applications	IHC, WB
Immunogen	The immunogen is a synthetic peptide directed towards the N terminal region of human MGC42174
Target	DIS3L2
Preservatives	Liquid. Purified antibody supplied in 1x PBS buffer with 0.09% (w/v) sodium azide and 2% sucrose.
Form/Appearance	Liquid. Purified antibody supplied in 1x PBS buffer with 0.09% (w/v) sodium azide and 2% sucrose.
Concentration	1.0 mg/ml
Storage	Maintain refrigerated at 2-8°C for up to 2 weeks. For long term storage store at -20°C in small aliquots to prevent freeze-thaw cycles.
Note	For research use only
Protein Sequence	Synthetic peptide located within the following region: WKVVKPESNDKETEAAYESDIPEELCGHHLPQQSLKSYNDSPDVIVEAQF
Clonality	Polyclonal
MW	68kDa
Uniprot ID	Q8IYB7
NCBI	NP_689596
Expiration Date	12 months from date of receipt.



Rabbit Anti-MGC42174 Antibody, Paraffin ...



WB Suggested Anti-MGC42174 Antibody Titr...