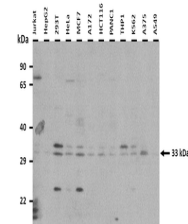


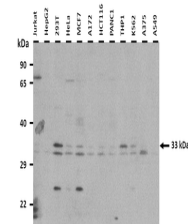
Product Datasheet

RNASEH2A antibody (orb324883)

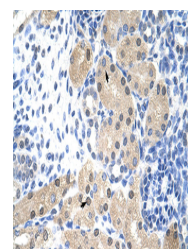
Description	Rabbit polyclonal antibody to RNASEH2A
Species/Host	Rabbit
Reactivity	Human
Conjugation	Unconjugated
Tested Applications	IHC, WB
Immunogen	The immunogen is a synthetic peptide directed towards the middle region of human RNASEH2A
Target	RNASEH2A
Preservatives	Liquid. Purified antibody supplied in 1x PBS buffer with 0.09% (w/v) sodium azide and 2% sucrose.
Form/Appearance	Liquid. Purified antibody supplied in 1x PBS buffer with 0.09% (w/v) sodium azide and 2% sucrose.
Concentration	1.0 mg/ml
Storage	Maintain refrigerated at 2-8°C for up to 2 weeks. For long term storage store at -20°C in small aliquots to prevent freeze-thaw cycles.
Note	For research use only
Protein Sequence	Synthetic peptide located within the following region: AQ TILEKEAEDVIWEDSASENQEGLRKITSYFLNEGSQARPRSSHRYFLE
Clonality	Polyclonal
MW	33 kDa
Uniprot ID	O75792
NCBI	NP_006388
Expiration Date	12 months from date of receipt.



25 ug of the indicated Human whole cell ...



25 ug of the indicated Human whole cell ...



Rabbit Anti-RNASEH2A Antibody, Paraffin ...