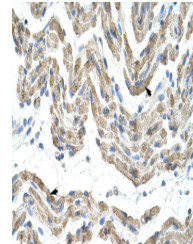


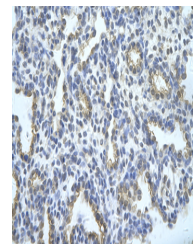
Product Datasheet

TRA2B antibody (orb324872)

Description	Rabbit polyclonal antibody to TRA2B
Species/Host	Rabbit
Reactivity	Human
Conjugation	Unconjugated
Tested Applications	IHC, WB
Immunogen	The immunogen is a synthetic peptide directed towards the middle region of human SFRS10
Target	TRA2B
Preservatives	Liquid. Purified antibody supplied in 1x PBS buffer with 0.09% (w/v) sodium azide and 2% sucrose.
Form/Appearance	Liquid. Purified antibody supplied in 1x PBS buffer with 0.09% (w/v) sodium azide and 2% sucrose.
Concentration	1.0 mg/ml
Storage	Maintain refrigerated at 2-8°C for up to 2 weeks. For long term storage store at -20°C in small aliquots to prevent freeze-thaw cycles.
Note	For research use only
Protein Sequence	Synthetic peptide located within the following region: GVFGLSLYTTERDLREVFVSKYGPIADVSIVYDQQSRRSRGFVYFENVD
Clonality	Polyclonal
MW	32kDa
Uniprot ID	P62995
NCBI	NP_004584
Expiration Date	12 months from date of receipt.



Rabbit Anti-SFRS10 Antibody, Paraffin Em...



Rabbit Anti-TRA2B Antibody, Paraffin Emb...



WB Suggested Anti-SFRS10 Antibody Titrat...