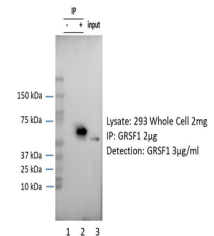


Product Datasheet

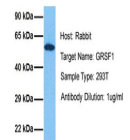
GRSF1 antibody (orb324854)

Description	Rabbit polyclonal antibody to GRSF1
Species/Host	Rabbit
Reactivity	Human
Conjugation	Unconjugated
Tested Applications	WB
Immunogen	The immunogen is a synthetic peptide directed towards the middle region of human GRSF1
Target	GRSF1
Preservatives	Liquid. Purified antibody supplied in 1x PBS buffer with 0.09% (w/v) sodium azide and 2% sucrose.
Form/Appearance	Liquid. Purified antibody supplied in 1x PBS buffer with 0.09% (w/v) sodium azide and 2% sucrose.
Concentration	0.5 mg/ml
Storage	Maintain refrigerated at 2-8°C for up to 2 weeks. For long term storage store at -20°C in small aliquots to prevent freeze-thaw cycles.
Note	For research use only
Protein Sequence	Synthetic peptide located within the following region: IRNGENGIHFLLRDGRKRRGDALIEMESEQDVQKALEKHRMYMGQRYVEV
Clonality	Polyclonal
MW	53kDa
Uniprot ID	Q12849
NCBI	NP_002083
Expiration Date	12 months from date of receipt.



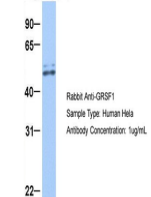
GRSF1 was immunoprecipitated from 1 mg H...

GRSF1



Host: Rabbit, Target Name: GRSF1, Sample...

GRSF1



Host: Rabbit, Target Name: GRSF1, Sample...