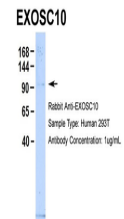


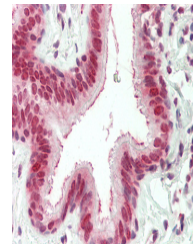
Product Datasheet

EXOSC10 antibody (orb324837)

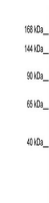
Description	Rabbit polyclonal antibody to EXOSC10
Species/Host	Rabbit
Reactivity	Human
Conjugation	Unconjugated
Tested Applications	WB
Immunogen	The immunogen is a synthetic peptide directed towards the C-terminal region region of human EXOSC10
Target	EXOSC10
Preservatives	Liquid. Purified antibody supplied in 1x PBS buffer with 0.09% (w/v) sodium azide and 2% sucrose.
Form/Appearance	Liquid. Purified antibody supplied in 1x PBS buffer with 0.09% (w/v) sodium azide and 2% sucrose.
Concentration	0.5 mg/ml
Storage	Maintain refrigerated at 2-8°C for up to 2 weeks. For long term storage store at -20°C in small aliquots to prevent freeze-thaw cycles.
Note	For research use only
Protein Sequence	Synthetic peptide located within the following region: ACKAAAEQAISVRQVVLENAAKKRERATSDPRTEQKQEKKRLKISKKP
Clonality	Polyclonal
MW	101kDa
Uniprot ID	Q01780
NCBI	NP_001001998
Expiration Date	12 months from date of receipt.



Host: Rabbit,
Target Name:
EXOSC10,
Samp...



Rabbit Anti-
EXOSC10
antibody,
Formalin F...



WB Suggested
Anti-EXOSC10
Antibody Titra...