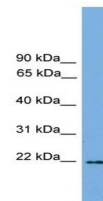


Product Datasheet

Jdp2 antibody (orb324698)

Description	Rabbit polyclonal antibody to Jdp2
Species/Host	Rabbit
Reactivity	Mouse
Conjugation	Unconjugated
Tested Applications	WB
Immunogen	The immunogen is a synthetic peptide directed towards the c terminal region of mouse Jundm2
Target	Jdp2
Preservatives	Liquid. Purified antibody supplied in 1x PBS buffer with 0.09% (w/v) sodium azide and 2% sucrose.
Form/Appearance	Liquid. Purified antibody supplied in 1x PBS buffer with 0.09% (w/v) sodium azide and 2% sucrose.
Concentration	0.5 mg/ml
Storage	Maintain refrigerated at 2-8°C for up to 2 weeks. For long term storage store at -20°C in small aliquots to prevent freeze-thaw cycles.
Note	For research use only
Protein Sequence	Synthetic peptide located within the following region: LKTQIEELKLERQQLILMLNRHRPTCIVRTDSVRTPESEGNPLLEQLDKK
Clonality	Polyclonal
MW	19kDa
Uniprot ID	P97875
NCBI	NP_112149
Expiration Date	12 months from date of receipt.



Western blot analysis of mouse Heart tis...



WB Suggested Anti-Jundm2 Antibody Titrat...