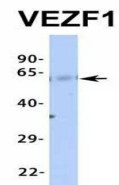


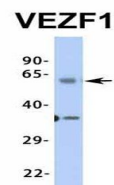
Product Datasheet

VEZF1 antibody (orb324621)

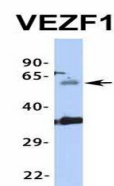
Description	Rabbit polyclonal antibody to VEZF1
Species/Host	Rabbit
Reactivity	Canine, Equine, Guinea pig, Human, Mouse, Rat, Zebrafish
Conjugation	Unconjugated
Tested Applications	IHC, WB
Immunogen	The immunogen is a synthetic peptide directed towards the middle region of human VEZF1
Target	VEZF1
Preservatives	Liquid. Purified antibody supplied in 1x PBS buffer with 0.09% (w/v) sodium azide and 2% sucrose.
Form/Appearance	Liquid. Purified antibody supplied in 1x PBS buffer with 0.09% (w/v) sodium azide and 2% sucrose.
Concentration	0.5 mg/ml
Storage	Maintain refrigerated at 2-8°C for up to 2 weeks. For long term storage store at -20°C in small aliquots to prevent freeze-thaw cycles.
Note	For research use only
Protein Sequence	Synthetic peptide located within the following region: SCNICGKLLSAAYITSHLKTHGQSQSINCNTCKQGISKTCMSEETSNOQKQ
Clonality	Polyclonal
MW	57kDa
Uniprot ID	Q14119
NCBI	NP_009077
Expiration Date	12 months from date of receipt.



Western blot analysis of human Fetal Liv...



Western blot analysis of human Fetal Lun...



Western blot analysis of human Fetal Hea...