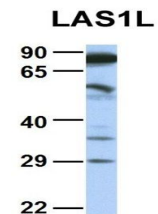


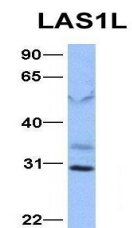
Product Datasheet

LAS1L antibody (orb324567)

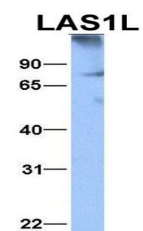
Description	Rabbit polyclonal antibody to LAS1L
Species/Host	Rabbit
Reactivity	Human
Conjugation	Unconjugated
Tested Applications	WB
Immunogen	The immunogen is a synthetic peptide directed towards the middle region of Human LAS1L
Target	LAS1L
Preservatives	Liquid. Purified antibody supplied in 1x PBS buffer with 0.09% (w/v) sodium azide and 2% sucrose.
Form/Appearance	Liquid. Purified antibody supplied in 1x PBS buffer with 0.09% (w/v) sodium azide and 2% sucrose.
Concentration	0.5 mg/ml
Storage	Maintain refrigerated at 2-8°C for up to 2 weeks. For long term storage store at -20°C in small aliquots to prevent freeze-thaw cycles.
Note	For research use only
Protein Sequence	Synthetic peptide located within the following region: SSFGSEAKAQQQEEQGSVNDVKEEEKEEKEVLDPQVEEEEENDDDQEEEE
Clonality	Polyclonal
MW	83kDa
Uniprot ID	Q9Y4W2
NCBI	NP_112483
Expiration Date	12 months from date of receipt.



Western blot analysis of human COLO205 t...



Western blot analysis of human Jurkat ti...



Western blot analysis of human MCF7 tiss...