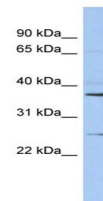


Product Datasheet

ZFAND6 antibody (orb324538)

Description	Rabbit polyclonal antibody to ZFAND6
Species/Host	Rabbit
Reactivity	Canine, Equine, Guinea pig, Human, Mouse, Rat, Zebrafish
Conjugation	Unconjugated
Tested Applications	WB
Immunogen	The immunogen is a synthetic peptide directed towards the middle region of human ZFAND6
Target	ZFAND6
Preservatives	Liquid. Purified antibody supplied in 1x PBS buffer with 0.09% (w/v) sodium azide and 2% sucrose.
Form/Appearance	Liquid. Purified antibody supplied in 1x PBS buffer with 0.09% (w/v) sodium azide and 2% sucrose.
Concentration	0.5 mg/ml
Storage	Maintain refrigerated at 2-8°C for up to 2 weeks. For long term storage store at -20°C in small aliquots to prevent freeze-thaw cycles.
Note	For research use only
Protein Sequence	Synthetic peptide located within the following region: LTGFECRCGNVYCGVHRYSDVHNCSEYNYKADAAEKIRKENPWWVGEKIQK
Clonality	Polyclonal
MW	22kDa
Uniprot ID	Q6FIF0
NCBI	NP_061879
Expiration Date	12 months from date of receipt.



Western blot analysis of human Stomach t...



WB Suggested Anti-ZFAND6 Antibody Titrat...