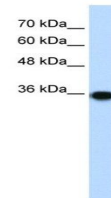


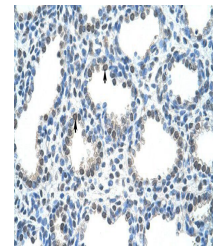
Product Datasheet

PIR antibody (orb324488)

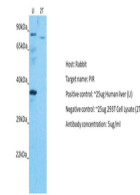
Description	Rabbit polyclonal antibody to PIR
Species/Host	Rabbit
Reactivity	Human
Conjugation	Unconjugated
Tested Applications	IHC, WB
Immunogen	The immunogen is a synthetic peptide directed towards the C terminal region of human PIR
Target	PIR
Preservatives	Liquid. Purified antibody supplied in 1x PBS buffer with 0.09% (w/v) sodium azide and 2% sucrose.
Form/Appearance	Liquid. Purified antibody supplied in 1x PBS buffer with 0.09% (w/v) sodium azide and 2% sucrose.
Concentration	1.0 mg/ml
Storage	Maintain refrigerated at 2-8°C for up to 2 weeks. For long term storage store at -20°C in small aliquots to prevent freeze-thaw cycles.
Note	For research use only
Protein Sequence	Synthetic peptide located within the following region: SHFVLIAGEPLREPVIQHGPVMTNNEISQAILDFRNAKNGFERAKTWK
Clonality	Polyclonal
MW	32kDa
Uniprot ID	O00625
NCBI	NP_003653
Expiration Date	12 months from date of receipt.



Western blot analysis of HepG2 cell lysa...



Immunohistochemical staining of human Lu...



Host: Rabbit, Target: PIR, Positive cont...