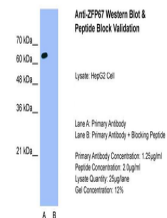


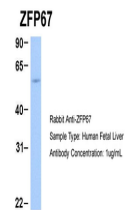
Product Datasheet

ZBTB7B antibody (orb324428)

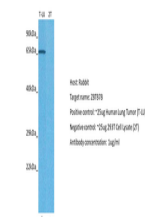
Description	Rabbit polyclonal antibody to ZBTB7B
Species/Host	Rabbit
Reactivity	Human
Conjugation	Unconjugated
Tested Applications	IHC, WB
Immunogen	The immunogen is a synthetic peptide directed towards the middle region of human ZFP67
Target	ZBTB7B
Preservatives	Liquid. Purified antibody supplied in 1x PBS buffer with 0.09% (w/v) sodium azide and 2% sucrose.
Form/Appearance	Liquid. Purified antibody supplied in 1x PBS buffer with 0.09% (w/v) sodium azide and 2% sucrose.
Concentration	1.0 mg/ml
Storage	Maintain refrigerated at 2-8°C for up to 2 weeks. For long term storage store at -20°C in small aliquots to prevent freeze-thaw cycles.
Note	For research use only
Protein Sequence	Synthetic peptide located within the following region: DLMAYLSSLHQDNLAPGLDSQDKLVRKRRSQMPQECPVCHKIIHGAGKLP
Clonality	Polyclonal
MW	58kDa
Uniprot ID	O15156
NCBI	NP_056956
Expiration Date	12 months from date of receipt.



Host: Rabbit,
Target Name:
ZFP67,
Sample...



Host: Rabbit,
Target Name:
ZFP67,
Sample...



Host: Rabbit,
Target:
ZBTB7B,
Positive c...