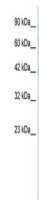


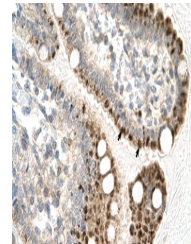
Product Datasheet

ZFP1 antibody (orb324380)

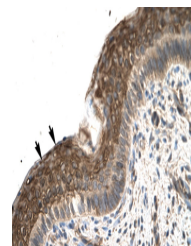
Description	Rabbit polyclonal antibody to ZFP1
Species/Host	Rabbit
Reactivity	Human
Conjugation	Unconjugated
Tested Applications	IHC, WB
Immunogen	The immunogen is a synthetic peptide directed towards the N terminal region of human ZFP1
Target	ZFP1
Preservatives	Liquid. Purified antibody supplied in 1x PBS buffer with 0.09% (w/v) sodium azide and 2% sucrose.
Form/Appearance	Liquid. Purified antibody supplied in 1x PBS buffer with 0.09% (w/v) sodium azide and 2% sucrose.
Concentration	1.0 mg/ml
Storage	Maintain refrigerated at 2-8°C for up to 2 weeks. For long term storage store at -20°C in small aliquots to prevent freeze-thaw cycles.
Note	For research use only
Protein Sequence	Synthetic peptide located within the following region: SNRSYAGKQTDECNEFGKALLYLKQEKTHSGVEYSEYNKSGKALSHKAAI
Clonality	Polyclonal
MW	41kDa
Uniprot ID	Q6P2D0
NCBI	NP_710155
Expiration Date	12 months from date of receipt.



Jurkat Whole Cell



Rabbit Anti-ZFP1 Antibody, Paraffin Embe...



Rabbit Anti-ZFP1 Antibody, Paraffin Embe...