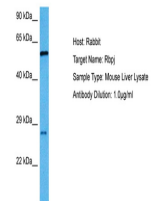


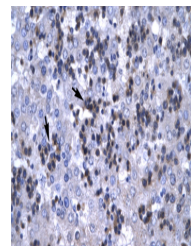
Product Datasheet

RBPJ antibody (orb324370)

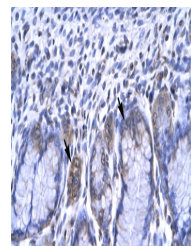
Description	Rabbit polyclonal antibody to RBPJ
Species/Host	Rabbit
Reactivity	Human, Mouse
Conjugation	Unconjugated
Tested Applications	IHC, IP, WB
Immunogen	The immunogen is a synthetic peptide directed towards the C terminal region of human RBPSUH
Target	RBPJ
Preservatives	Liquid. Purified antibody supplied in 1x PBS buffer with 0.09% (w/v) sodium azide and 2% sucrose.
Form/Appearance	Liquid. Purified antibody supplied in 1x PBS buffer with 0.09% (w/v) sodium azide and 2% sucrose.
Concentration	0.5 mg/ml
Storage	Maintain refrigerated at 2-8°C for up to 2 weeks. For long term storage store at -20°C in small aliquots to prevent freeze-thaw cycles.
Note	For research use only
Protein Sequence	Synthetic peptide located within the following region: RPHCSAAGAILRANSSQVPPNESNTNSEGSYTNASTNSTSVTSSTATVVS
Clonality	Polyclonal
MW	56kDa
Uniprot ID	Q06330
NCBI	NP_976028
Expiration Date	12 months from date of receipt.



Host: Mouse,
Target Name:
RBPJ, Sample
T...



Human Liver



Human
Stomach