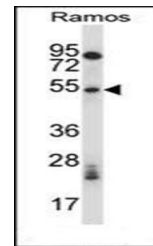
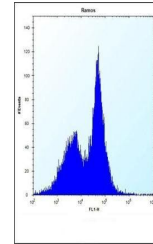


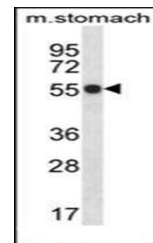
Product Datasheet

Mouse Phkg1 antibody (orb32378)

Description	Peptide affinity purified rabbit polyclonal antibody.
Species/Host	Rabbit
Reactivity	Human, Mouse
Conjugation	Unconjugated
Tested Applications	FC, WB
Immunogen	Synthetic Peptide
Target	Phkg1
Form/Appearance	Purified polyclonal antibody supplied in PBS with 0.09% (W/V) sodium azide. This antibody is purified through a protein A column, followed by peptide affinity purification.
Storage	Maintain refrigerated at 2-8°C for up to 2 weeks. For long term storage store at -20°C in small aliquots to prevent freeze-thaw cycles
Note	For research use only
Isotype	Rabbit IgG
Clonality	Polyclonal
MW	44960
Uniprot ID	P07934
NCBI	NP_035209.1
Dilution Range	WB: 1:1000, FACS: 1:10-50
Expiration Date	12 months from date of receipt.



Western blot analysis of Ramos cell line...



Western blot analysis of mouse stomach t...