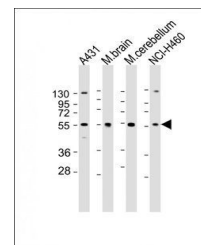
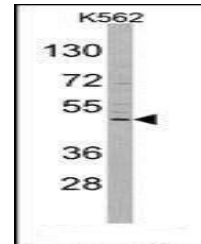


Product Datasheet

DRAGON antibody (orb32338)

Description	Purified rabbit polyclonal antibody.
Species/Host	Rabbit
Reactivity	Human, Mouse
Conjugation	Unconjugated
Tested Applications	IHC-P, WB
Immunogen	Synthetic Peptide
Target	RGMB
Form/Appearance	Purified monoclonal antibody supplied in PBS with 0.09% (W/V) sodium azide. This antibody is purified through a protein G column, followed by dialysis against PBS.
Storage	Maintain refrigerated at 2-8°C for up to 2 weeks. For long term storage store at -20°C in small aliquots to prevent freeze-thaw cycles
Note	For research use only
Isotype	Rabbit IgG
Clonality	Polyclonal
MW	47547
Uniprot ID	Q6NW40
NCBI	NP_001012779.2
Dilution Range	WB 1:50-1:100
Expiration Date	12 months from date of receipt.



WB analysis of A431 whole cell lysate (L...



Immunohistochemical staining of human pr...