
Product Datasheet

FOLR2 antibody (orb323293)

Description

FOLR2 antibody

Species/Host

Rabbit

Reactivity

Human, Mouse, Rat

Conjugation

Unconjugated

Tested

ELISA, IHC-P, WB

Applications
Immunogen

KLH conjugated synthetic peptide derived from human FOLR2. Please contact us for the exact immunogen sequence. The peptide is available as orb374949.

Target

FOLR2. Recognizes endogenous levels of FOLR2 protein

Form/Appearance

10 mM PBS, 0.02% sodium azide

Concentration

- 100 µg (in 200 µl): 0.5 mg/ml- 200 µg (in 400 µl): 0.5 mg/ml

Storage

Store at 4°C for up to two weeks. For long term storage, aliquot and store at -20°C, avoid freeze/thaw cycles.

Note

For research use only

Isotype

IgG

Clonality

Polyclonal

Purity

Polyclonal antibodies are purified by peptide affinity chromatography

MW

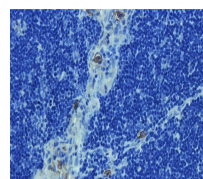
29 kDa

Uniprot ID
[D4A4S5](#), [P14207](#), [Q05685](#)
Entrez
[2350](#)
Dilution Range

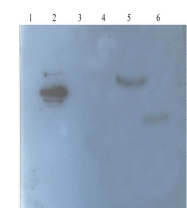
WB: 1:100-1000, IHC-P: 1:100-500 (based on 0.5 mg/ml)

Expiration Date

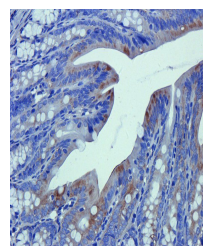
12 months from date of receipt.



Immunohistochemical staining of paraffin...



Western blot analysis of rat spinal cord...



Immunohistochemical staining of rat colo...