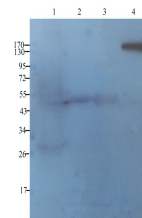


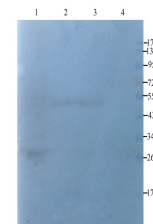
## Product Datasheet

### EpCAM antibody (orb323292)

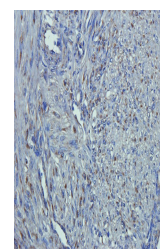
|                            |   |
|----------------------------|---|
| <b>Description</b>         | EpCAM antibody  |
| <b>Species/Host</b>        | Rabbit  |
| <b>Reactivity</b>          | Human, Mouse, Rat   |
| <b>Conjugation</b>         | Unconjugated  |
| <b>Tested Applications</b> | ELISA, IHC-P, WB  |
| <b>Immunogen</b>           | KLH conjugated synthetic peptide derived from human EpCAM. Please contact us for the exact immunogen sequence. The peptide is available as orb374948. |
| <b>Target</b>              | EpCAM. Recognizes endogenous levels of EpCAM protein  |
| <b>Form/Appearance</b>     | 10 mM PBS, 0.02% sodium azide   |
| <b>Concentration</b>       | - 100 µg (in 200 µl): 0.5 mg/ml- 200 µg (in 400 µl): 0.5 mg/ml  |
| <b>Storage</b>             | Store at 4°C for up to two weeks. For long term storage, aliquot and store at -20°C, avoid freeze/thaw cycles.  |
| <b>Note</b>                | For research use only   |
| <b>Isotype</b>             | IgG   |
| <b>Clonality</b>           | Polyclonal  |
| <b>Purity</b>              | Polyclonal antibodies are purified by peptide affinity chromatography   |
| <b>MW</b>                  | 35 kDa  |
| <b>Uniprot ID</b>          | <b>O55159, Q99JW5, P16422</b>   |
| <b>Entrez</b>              | <b>4072</b>   |
| <b>Dilution Range</b>      | WB: 1:100-300, IHC-P: 1:100-500 (based on 0.5 mg/ml)  |
| <b>Expiration Date</b>     | 12 months from date of receipt.   |



WB analysis of rat liver (lane 1), human...



Western blot analysis of rat liver (lane...)



IHC-P staining of human endometrial cancer...