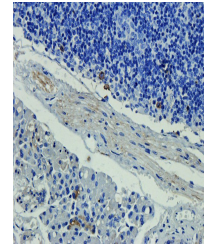


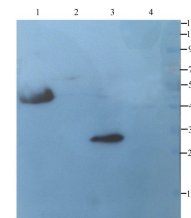
Product Datasheet

CD90 antibody (orb323290)

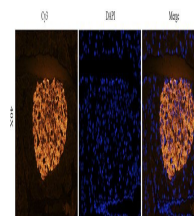
Description	CD90 antibody
Species/Host	Rabbit
Reactivity	Human, Mouse, Rat
Conjugation	Unconjugated
Tested Applications	ELISA, ICC, IF, IHC-P, WB
Immunogen	KLH conjugated synthetic peptide derived from human CD90. Please contact us for the exact immunogen sequence. The peptide is available as orb374946.
Target	CD90. Recognizes endogenous levels of CD90 protein
Form/Appearance	10 mM PBS, 0.02% sodium azide
Concentration	- 100 µg (in 200 µl): 0.5 mg/ml- 200 µg (in 400 µl): 0.5 mg/ml
Storage	Store at 4°C for up to two weeks. For long term storage, aliquot and store at -20°C, avoid freeze/thaw cycles.
Note	For research use only
Isotype	IgG
Clonality	Polyclonal
Purity	Polyclonal antibodies are purified by peptide affinity chromatography
MW	30 kDa
Dilution Range	IHC-P: 1:100-600, WB: 1:100-500, IF/ICC: 1:100-1000
Expiration Date	12 months from date of receipt.



Immunohistochemical staining of paraffin...



Western blot analysis of rat pancreas (l...



IF image of rat pancreas tissue using an...