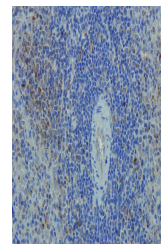


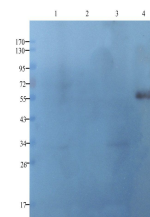
Product Datasheet

CD8 antibody (orb323288)

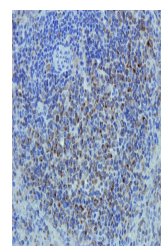
Description	CD8 antibody
Species/Host	Rabbit
Reactivity	Human, Mouse, Rat
Conjugation	Unconjugated
Tested Applications	ELISA, ICC, IF, IHC-P, WB
Immunogen	KLH conjugated synthetic peptide derived from human CD8. Please contact us for the exact immunogen sequence. The peptide is available as orb374945.
Target	CD8. Recognizes endogenous levels of CD8 protein
Form/Appearance	10 mM PBS, 0.02% sodium azide
Concentration	- 100 µg (in 200 µl): 0.5 mg/ml- 200 µg (in 400 µl): 0.5 mg/ml
Storage	Store at 4°C for up to two weeks. For long term storage, aliquot and store at -20°C, avoid freeze/thaw cycles.
Note	For research use only
Isotype	IgG
Clonality	Polyclonal
Purity	Polyclonal antibodies are purified by peptide affinity chromatography
MW	26 kDa
Uniprot ID	P07725 , P01732 , P01731
NCBI	001139345 , 001145873
Entrez	925
Dilution Range	IHC-P: 1:100-800, WB: 1:100-500, IF/ICC: 1:100-800
Expiration Date	12 months from date of receipt.



IHC-P image of mouse spleen tissue using...



WB analysis of rat thymus (lane 1), mous...



IHC-P image of mouse spleen tissue using...