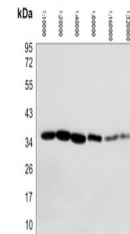


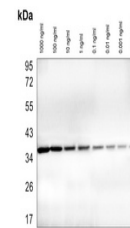
Product Datasheet

GAPDH antibody (HRP) (orb323287)

Description	Mouse monoclonal antibody against GAPDH conjugated to HRP
Species/Host	Mouse
Reactivity	Human, Mouse, Porcine, Primate, Rabbit, Rat, Zebrafish
Conjugation	HRP
Tested Applications	WB
Immunogen	KLH-conjugated synthetic peptide encompassing a sequence of human GAPDH. The exact sequence is proprietary.
Target	GAPDH
Preservatives	Liquid in 0.42% Potassium phosphate, 0.87% Sodium chloride, pH 7.3, 30% glycerol, and 0.01% sodium azide.
Form/Appearance	Liquid in 0.42% Potassium phosphate, 0.87% Sodium chloride, pH 7.3, 30% glycerol, and 0.01% sodium azide.
Storage	Shipped at 4°C. Upon delivery aliquot and store at -20°C for one year. Avoid freeze/thaw cycles.
Note	For research use only
Clonality	Monoclonal
Source	Mouse
Uniprot ID	P16858 , P04406 , P04797
Entrez	24383 , 100042025 , 2597
Dilution Range	WB: 1:2000-1:5000
Expiration Date	12 months from date of receipt.



Western blot analysis of GAPDH Antibody-...



Western blot analysis of GAPDH Antibody-...