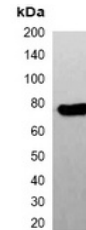


## Product Datasheet

### FLAG-tag antibody (HRP) (orb323281)

|                            |   |
|----------------------------|---|
| <b>Description</b>         | Mouse monoclonal antibody against FLAG-tag conjugated to HRP  |
| <b>Species/Host</b>        | Rabbit  |
| <b>Conjugation</b>         | HRP   |
| <b>Tested Applications</b> | WB  |
| <b>Immunogen</b>           | KLH-conjugated synthetic peptide encompassing a sequence of FLAG-tag. The exact sequence is proprietary.  |
| <b>Preservatives</b>       | Liquid in 0.42% Potassium phosphate, 0.87% Sodium chloride, pH 7.3, 30% glycerol, and 0.01% sodium azide. |
| <b>Form/Appearance</b>     | Liquid in 0.42% Potassium phosphate, 0.87% Sodium chloride, pH 7.3, 30% glycerol, and 0.01% sodium azide. |
| <b>Storage</b>             | Shipped at 4°C. Upon delivery aliquot and store at -20°C for one year. Avoid freeze/thaw cycles.          |
| <b>Note</b>                | For research use only   |
| <b>Clonality</b>           | Monoclonal  |
| <b>Source</b>              | Mouse   |
| <b>Dilution Range</b>      | WB: 1:5000-1:10000  |
| <b>Expiration Date</b>     | 12 months from date of receipt.   |



Western blot analysis of over-expressed ...