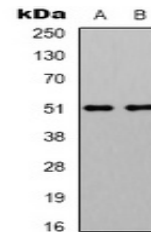


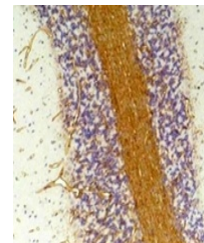
Product Datasheet

GABRA2 antibody (orb323269)

Description	Rabbit polyclonal antibody to GABRA2
Species/Host	Rabbit
Reactivity	Human, Mouse, Rat
Conjugation	Unconjugated
Tested Applications	IH, WB
Immunogen	KLH-conjugated synthetic peptide encompassing a sequence of human GABRA2. The exact sequence is proprietary.
Target	GABRA2
Preservatives	Liquid in 0.42% Potassium phosphate, 0.87% Sodium chloride, pH 7.3, 30% glycerol, and 0.01% sodium azide.
Form/Appearance	Liquid in 0.42% Potassium phosphate, 0.87% Sodium chloride, pH 7.3, 30% glycerol, and 0.01% sodium azide.
Storage	Maintain refrigerated at 2-8°C for up to 2 weeks. For long term storage store at -20°C in small aliquots to prevent freeze-thaw cycles.
Note	For research use only
Clonality	Polyclonal
Source	Rabbit
Uniprot ID	P47869
Entrez	282236
Dilution Range	WB: 1:1000-1:2000, IHC-P: 1:100-1:200
Expiration Date	12 months from date of receipt.



Western blot analysis of GABRA2 expressi...



Immunohistochemical analysis of GABRA2 S...