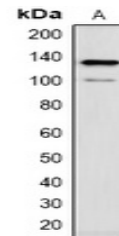


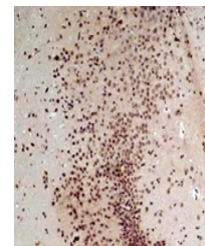
Product Datasheet

CACNA2D1 antibody (orb323233)

Description	Rabbit polyclonal antibody to CACNA2D1
Species/Host	Rabbit
Reactivity	Rat
Conjugation	Unconjugated
Tested Applications	IH, WB
Immunogen	KLH-conjugated synthetic peptide encompassing a sequence of rat CACNA2D1. The exact sequence is proprietary.
Target	CACNA2D1
Preservatives	Liquid in 0.42% Potassium phosphate, 0.87% Sodium chloride, pH 7.3, 30% glycerol, and 0.01% sodium azide.
Form/Appearance	Liquid in 0.42% Potassium phosphate, 0.87% Sodium chloride, pH 7.3, 30% glycerol, and 0.01% sodium azide.
Storage	Shipped at 4°C. Upon delivery aliquot and store at -20°C for one year. Avoid freeze/thaw cycles.
Note	For research use only
Clonality	Polyclonal
Source	Rabbit
Uniprot ID	P54290
Dilution Range	WB: 1:1000-1:2000, IHC-P: 1:50-1:200
Expiration Date	12 months from date of receipt.



Western blot analysis of CACNA2D1 expres...



Immunohistochemical analysis of CACNA2D1...